

PRIMADONNA 12

Design by: Studio Stile Masiero

MASIERO



La struttura metallica accompagna decori in fusione d'ottone. Paralumi in Pongè, pendagli in cristallo.

The metal frame, comes together with brass fusion decorations. Pongè Lamphades, crystal pendants.

Die Metallstruktur gesellt sich zu Verzierungen aus Messingguss. Lampenschirme aus Pongè, Gehänge aus Kristallglas.


La structure métallique accompagne des éléments en fusion de laiton.

Abat-jour en Pongè, breloques en cristal.

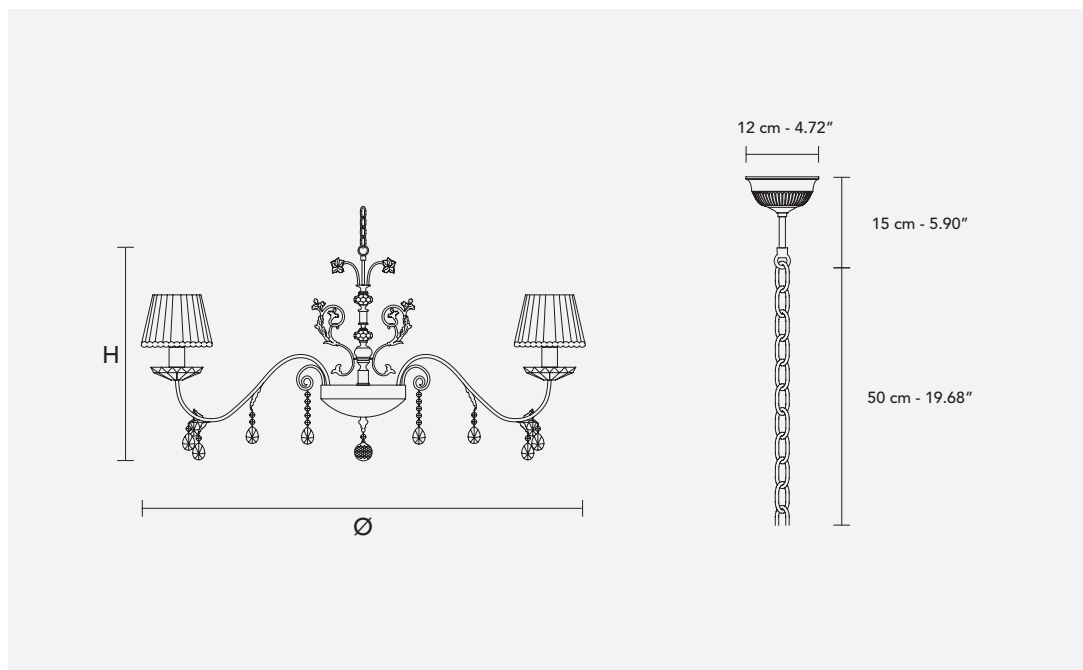
Металлический каркас с декором из литой латуни. Абажуры из эпонжа, подвесы из хрустала.

CE 

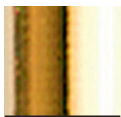
H 65 cm / 25.60"
Ø 120 cm / 47.30"

 12×E14×40 W max
USA 12×E12×40 W max
(not included)

Paralumi/shade PON-BD/16/IV



G01



G03