

BELLE EPOKE STL1

Design by: Studio Stile Masiero

MASIERO



Struttura metallica arricchita da decori in fusione d'ottone. Paralumi in Pongè, pendagli in foglia oro.

Metal frame enriched with cast brass decoration. Pongè Lamphades, gold leaf pendants.

Metallstruktur bereichert von Verzierungen aus Messingguss. Lampenschirme aus Pongè, Blattgold Gehängen.

Structure métallique, enrichie d'éléments en fusion de laiton. Abat-jour en Pongè, pendants en feuille dorée.

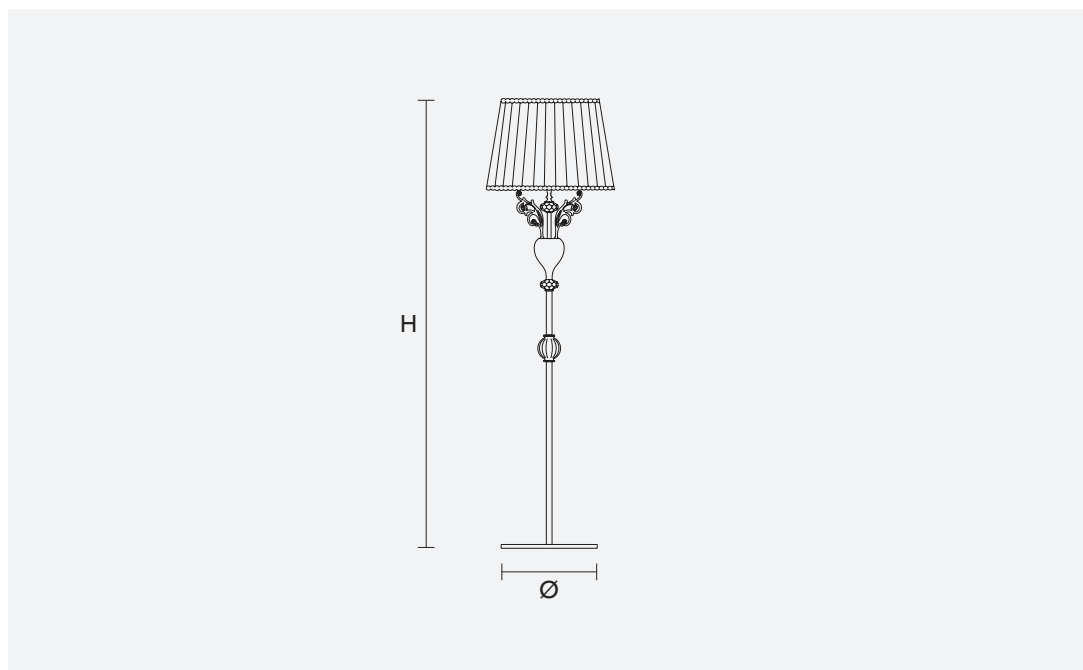
Металлический каркас, украшенный декором из литой латуни.



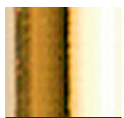
H 180 cm / 70.90"
Ø 40 cm / 15.80"

1xE27×60 W max
USA 1xE26×60 W max
(not included)

Paralumi/shade PON-BD/40/IV



G03+F01



G03



F01